

les terrasses du mexique delémont

4 appartements en PPE
Dossier de vente





Scannez pour visiter notre site internet

PLAN DRESSÉ POUR ENQUÊTE

Commune de Delémont | parcelle n° : 4783

surface : 785

Propriété de : Jolbat SA - Courtételle



SiTaDeL Sàrl

Manuel Lachat géomètre officiel

Route de Fossemaison 100

2800 Delémont

tél. 032 423 23 06

www.sitadel.ch

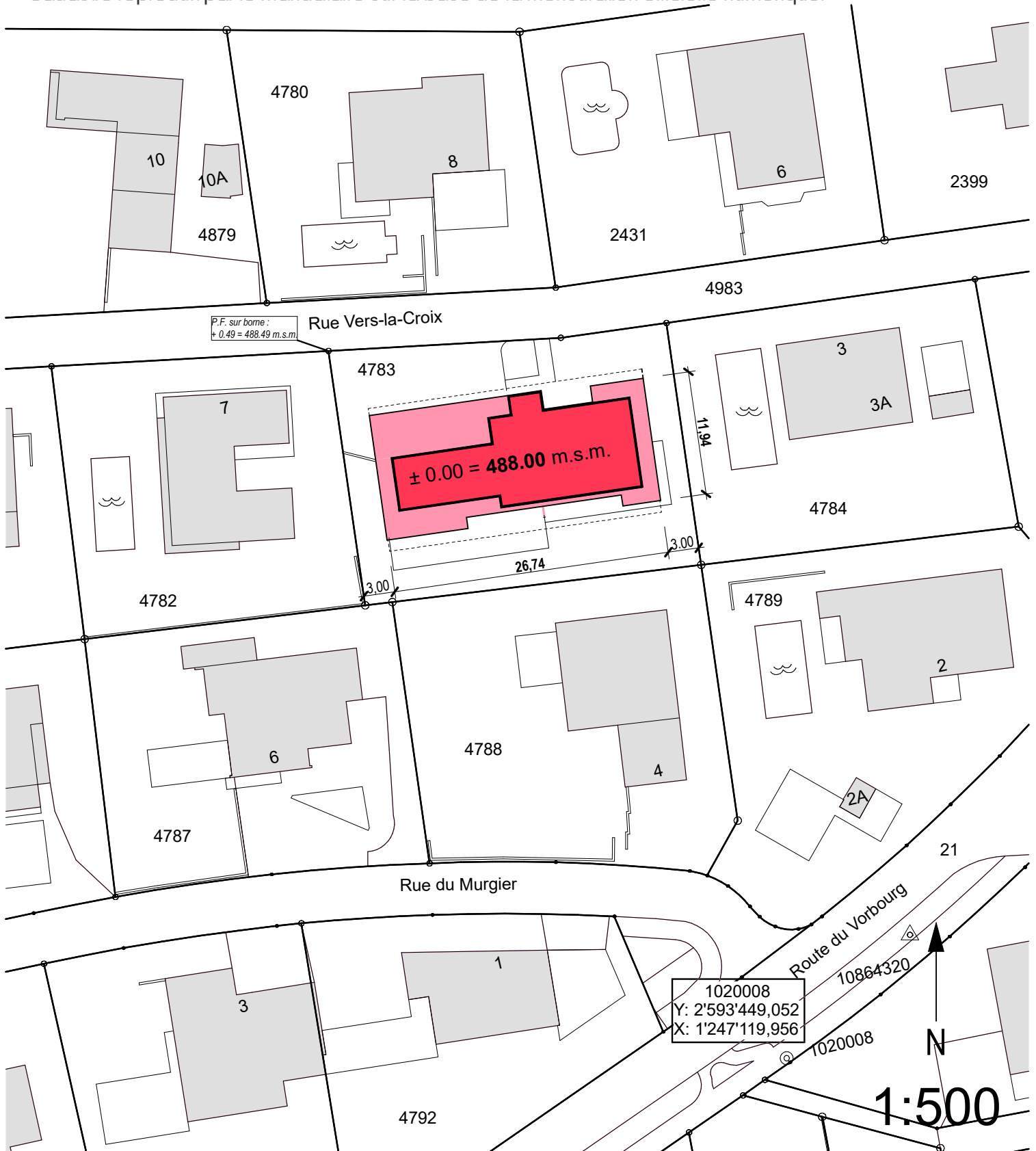
Plan certifié exact

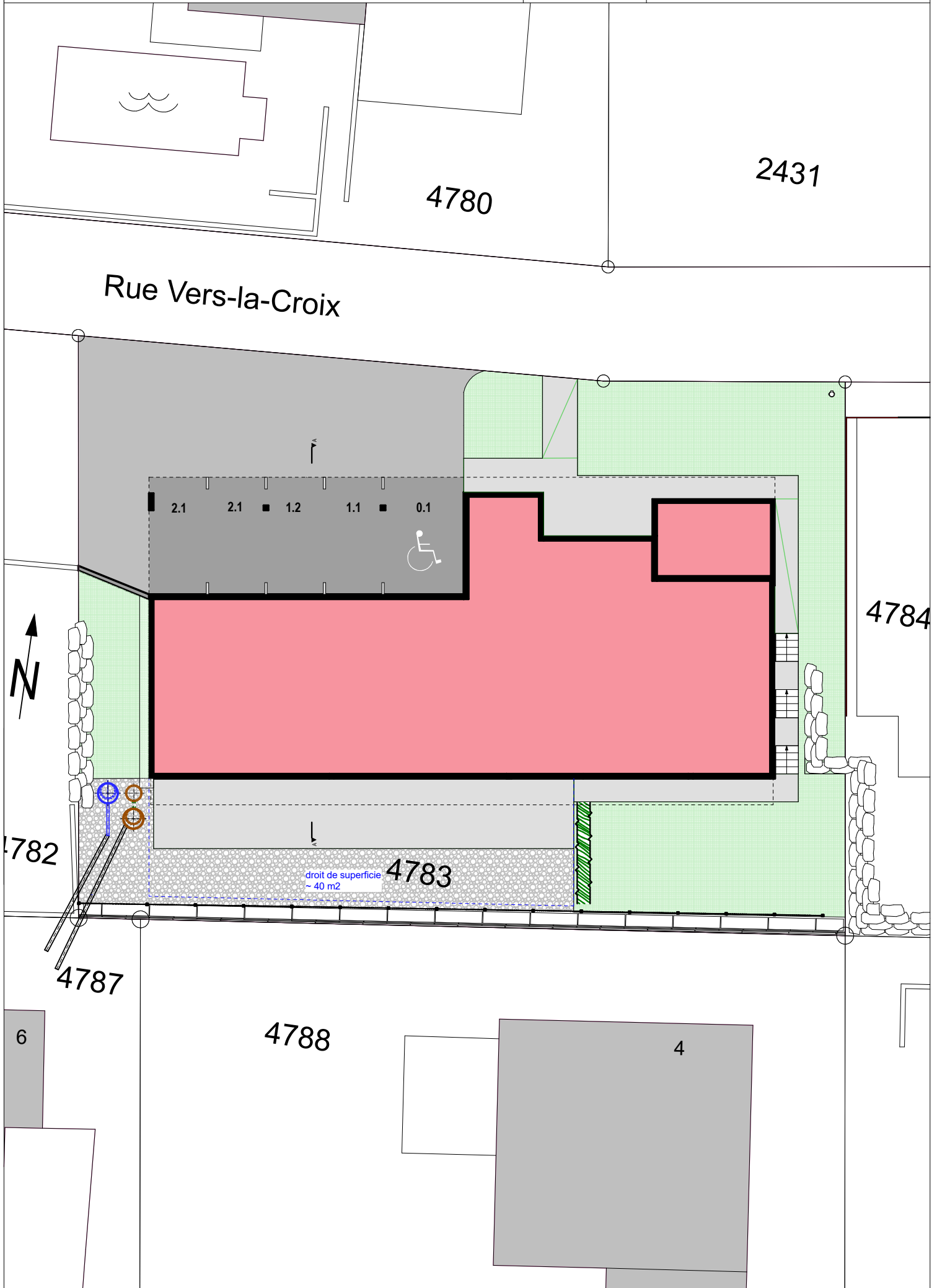
L'auteur du projet :

Delémont, le 04 décembre 2024

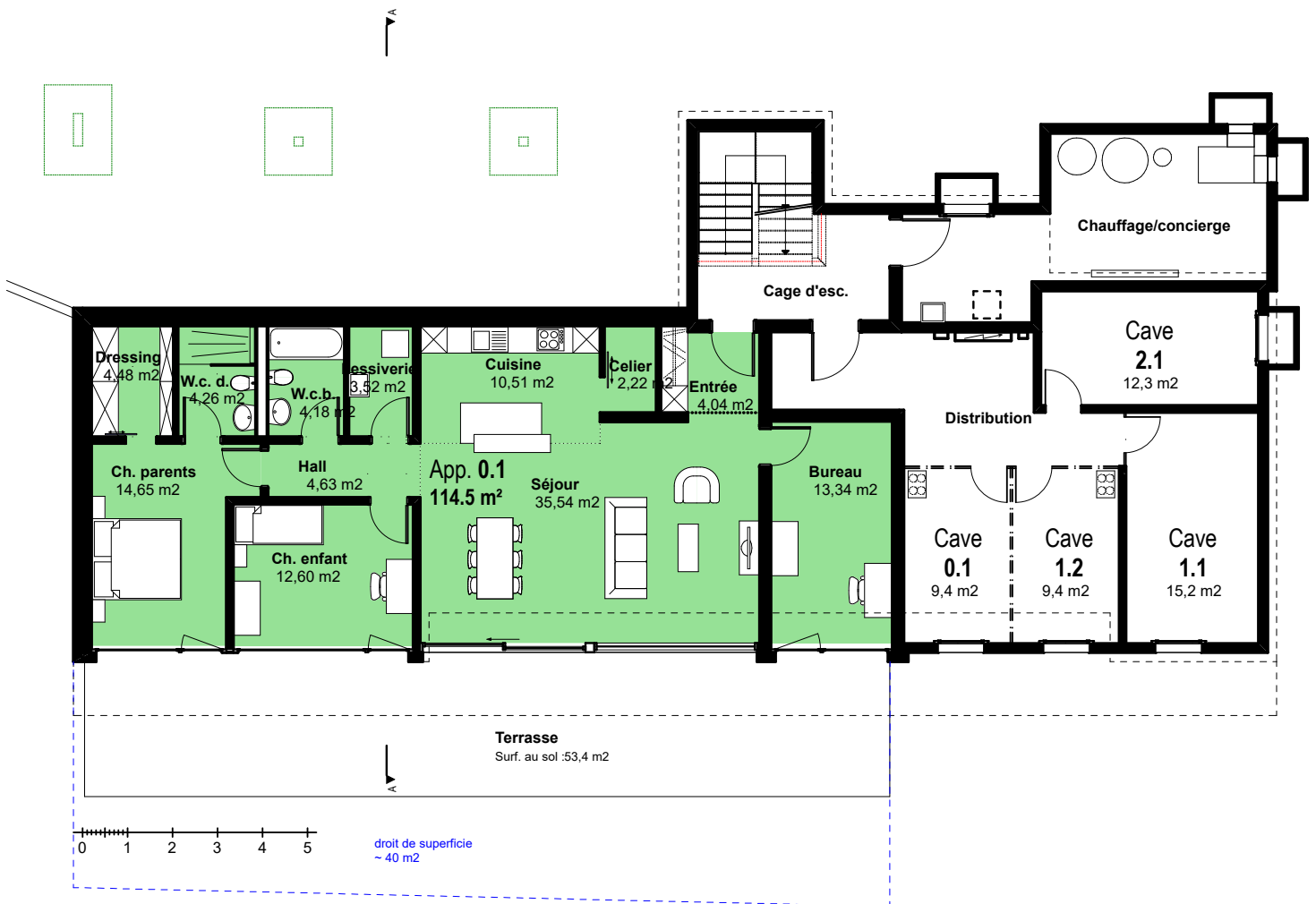
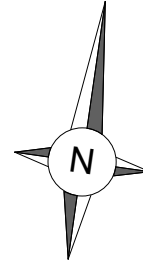
Le propriétaire :

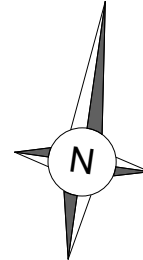
Cadastre reproduit par le mandataire sur la base de la mensuration officielle numérique.



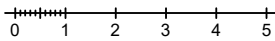
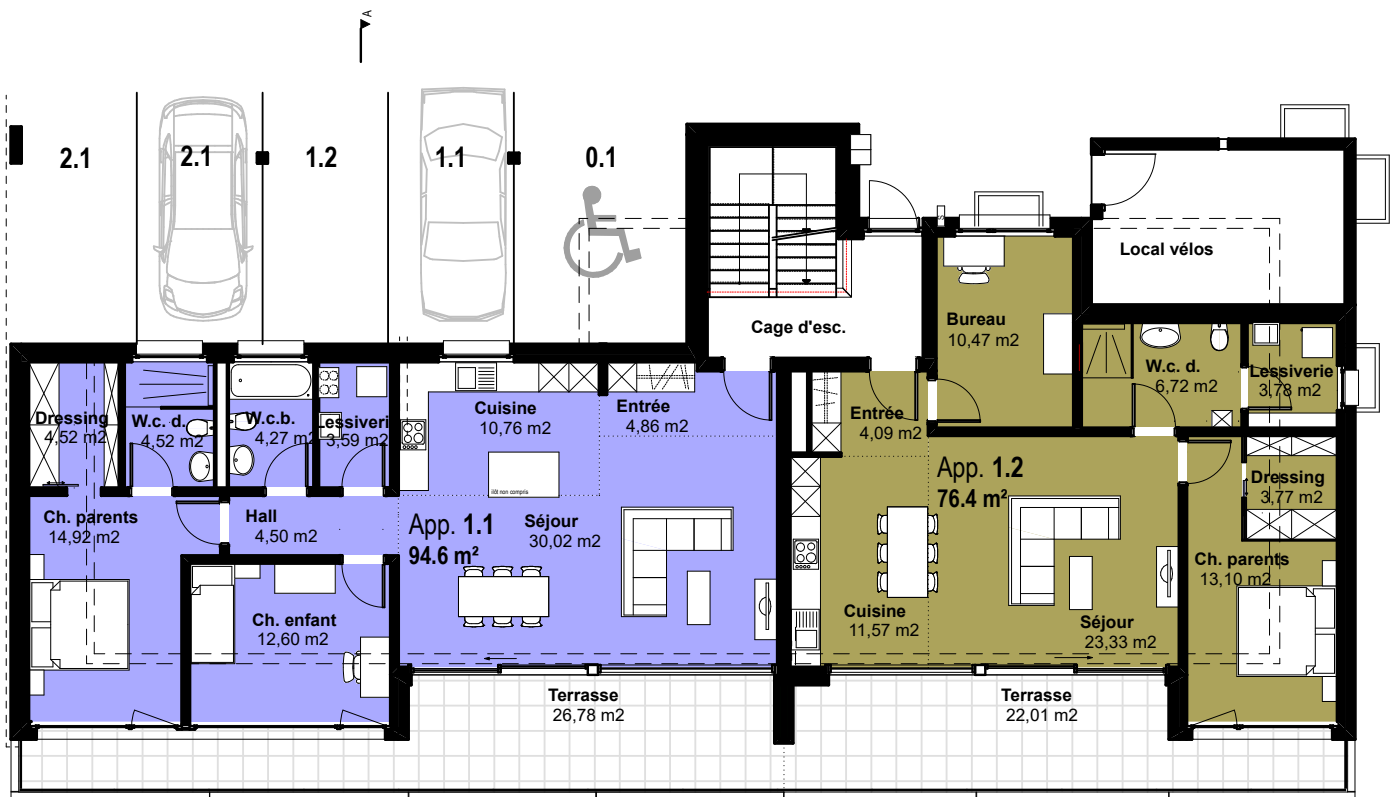


Rez inférieur 1-150

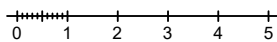
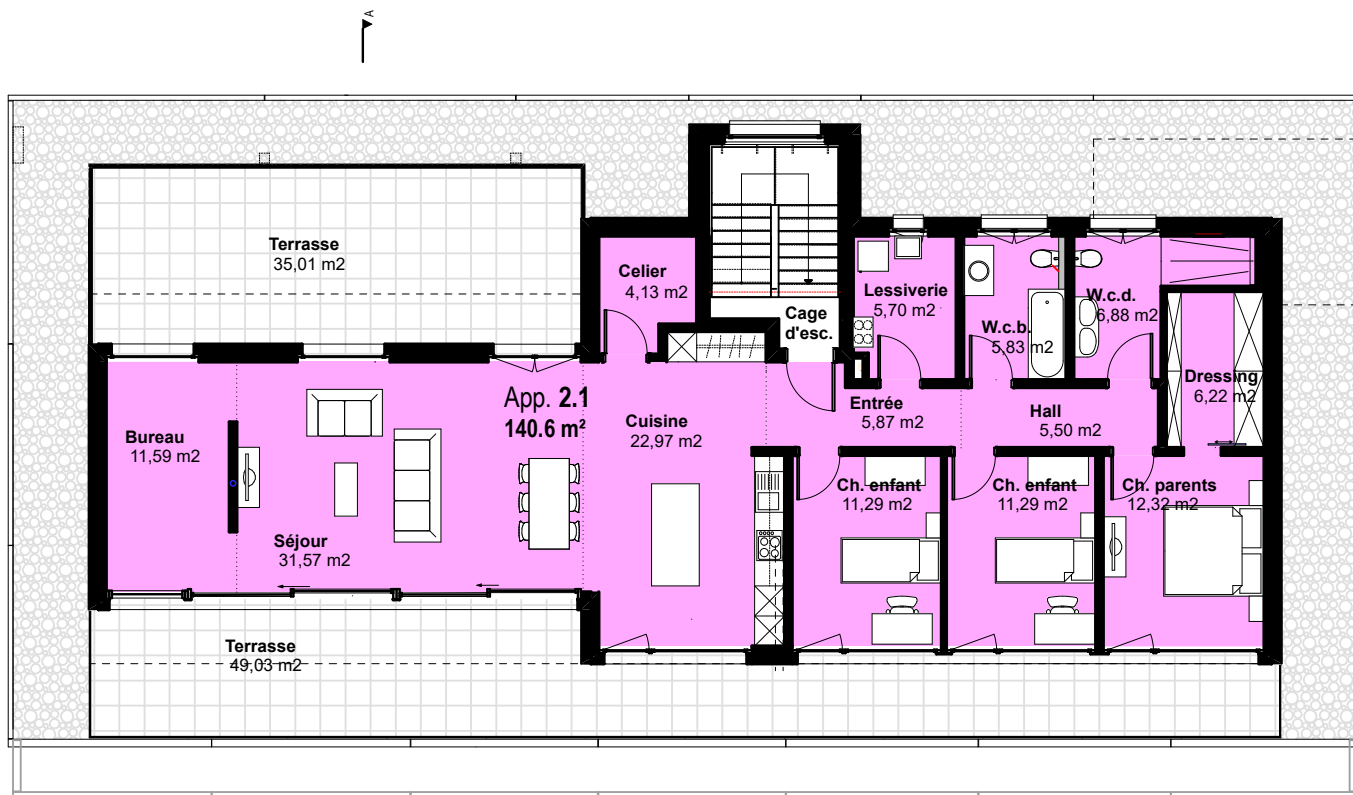
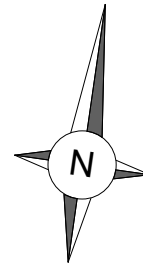


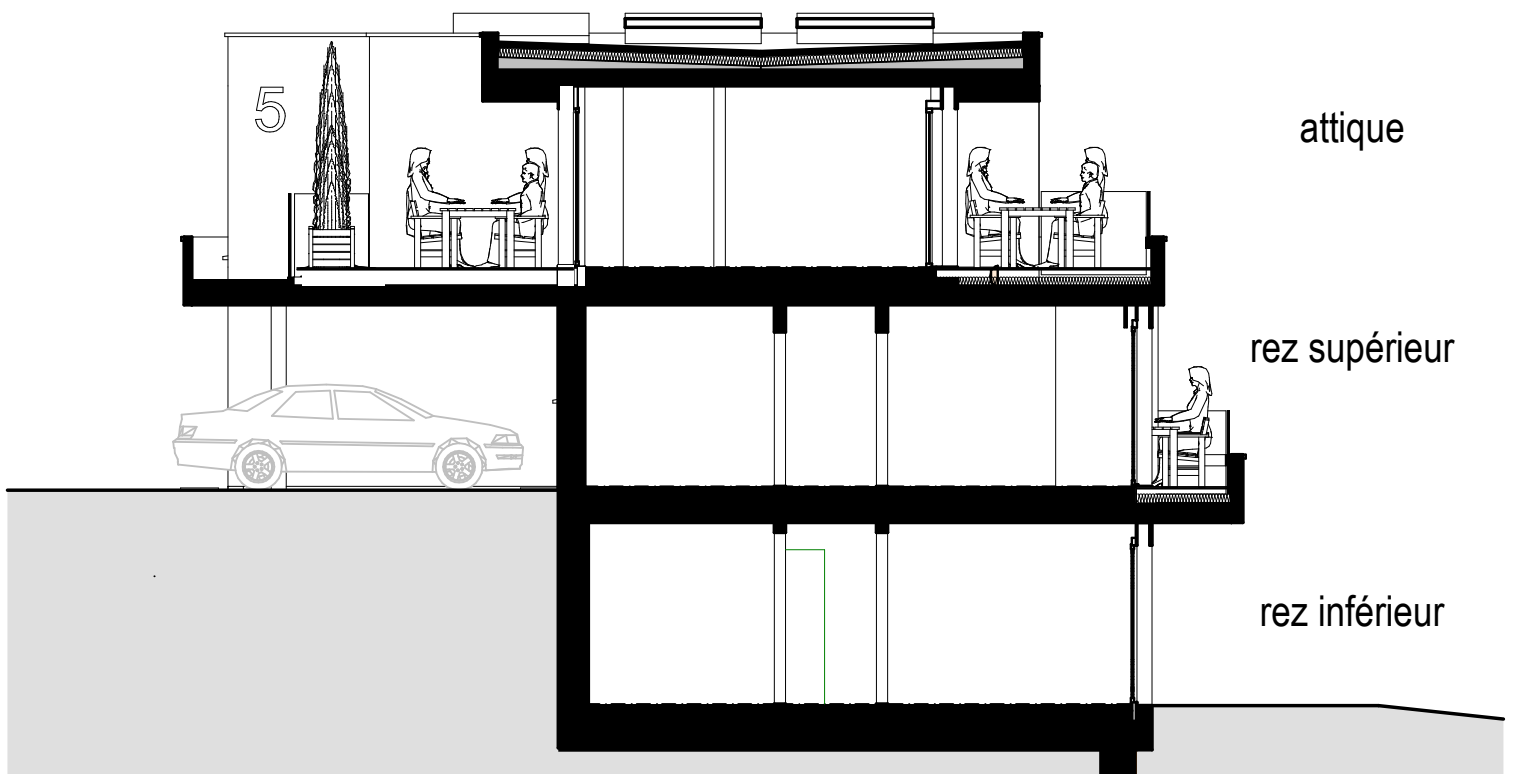


Rez supérieur 1-150

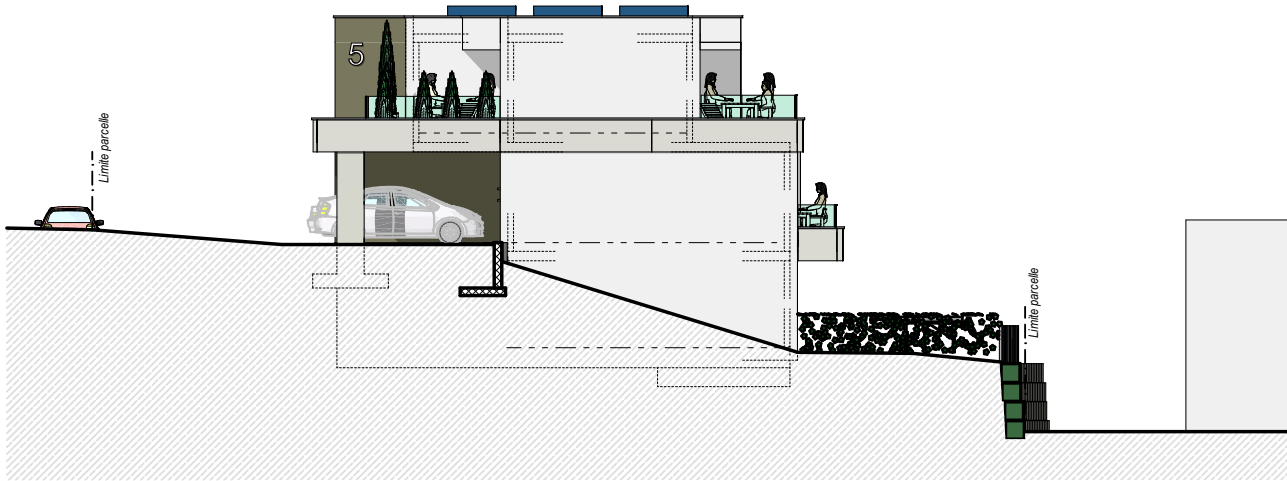


Attique 1-150

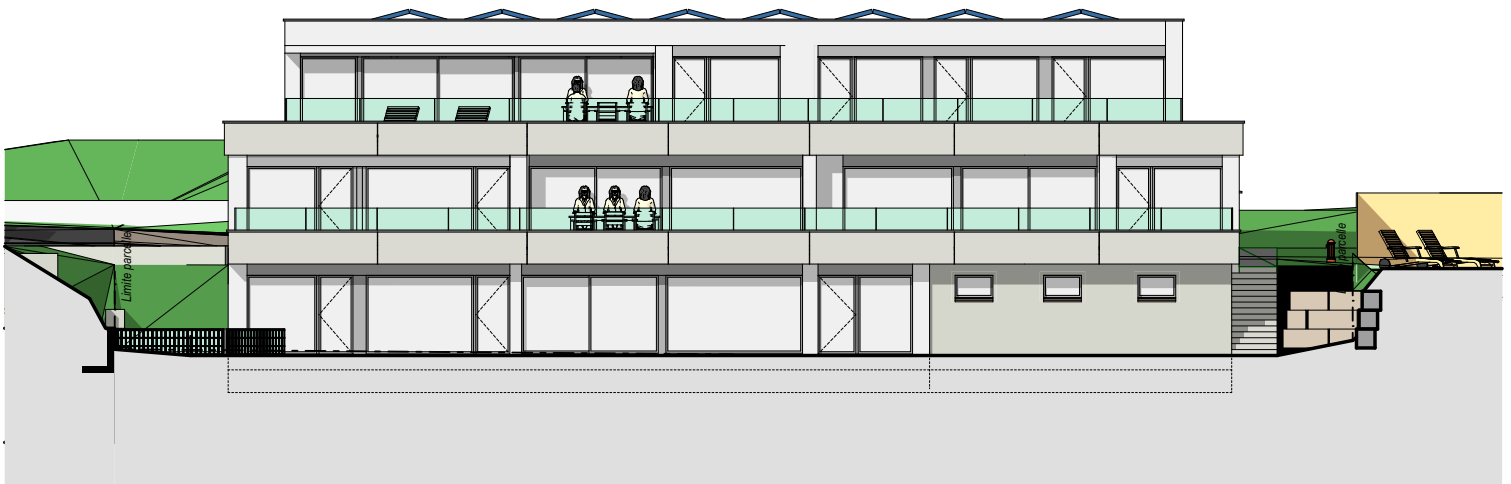




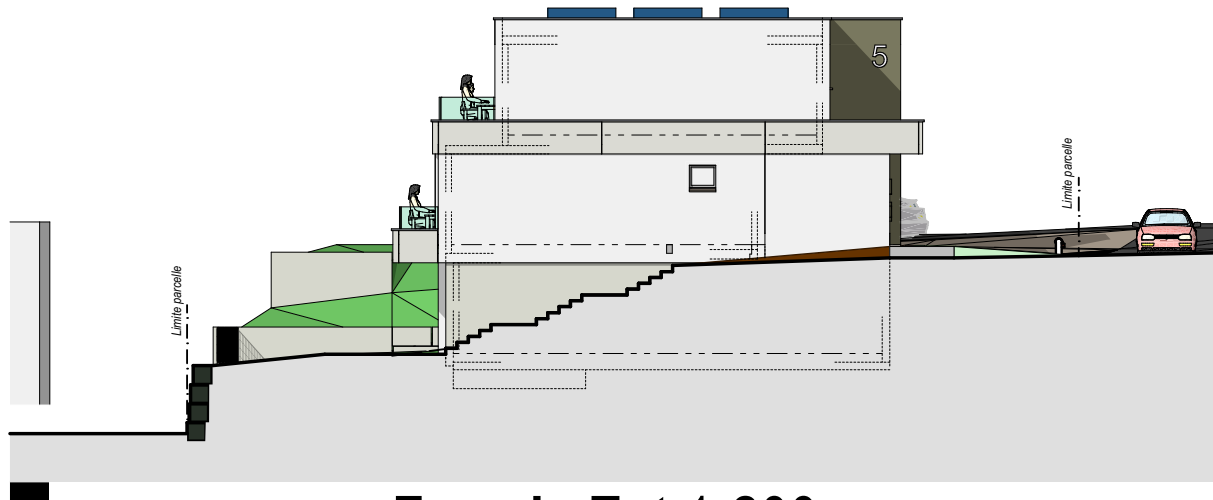
Coupe A-A 1-100



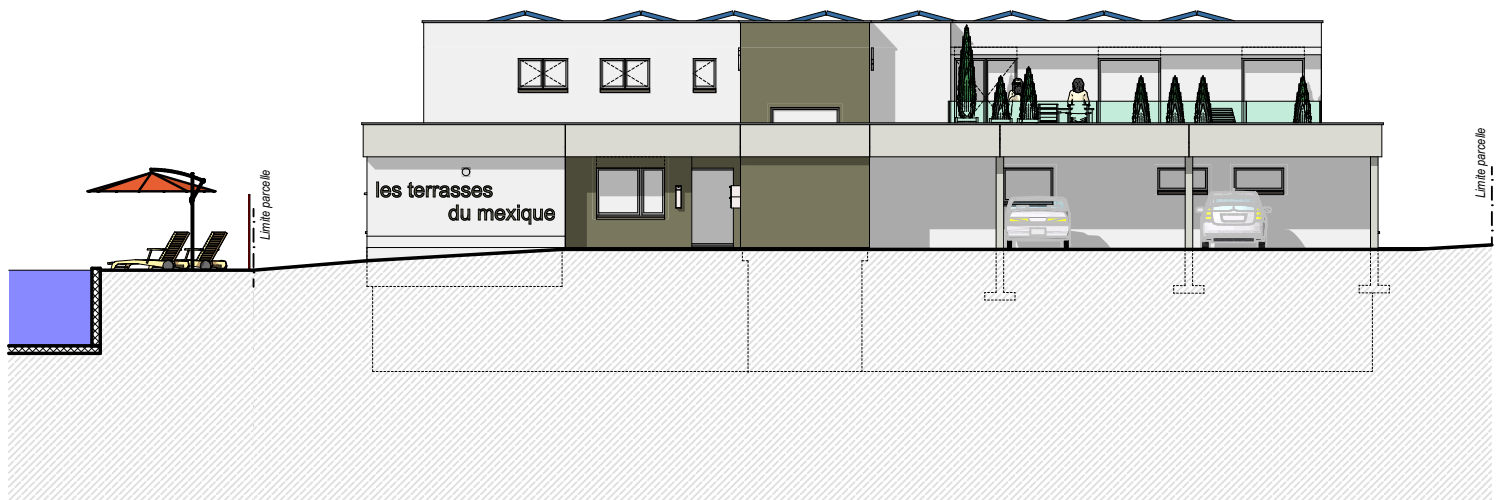
Façade Ouest 1-200



Façade Sud 1-200



Façade Est 1-200



Façade Nord 1-200